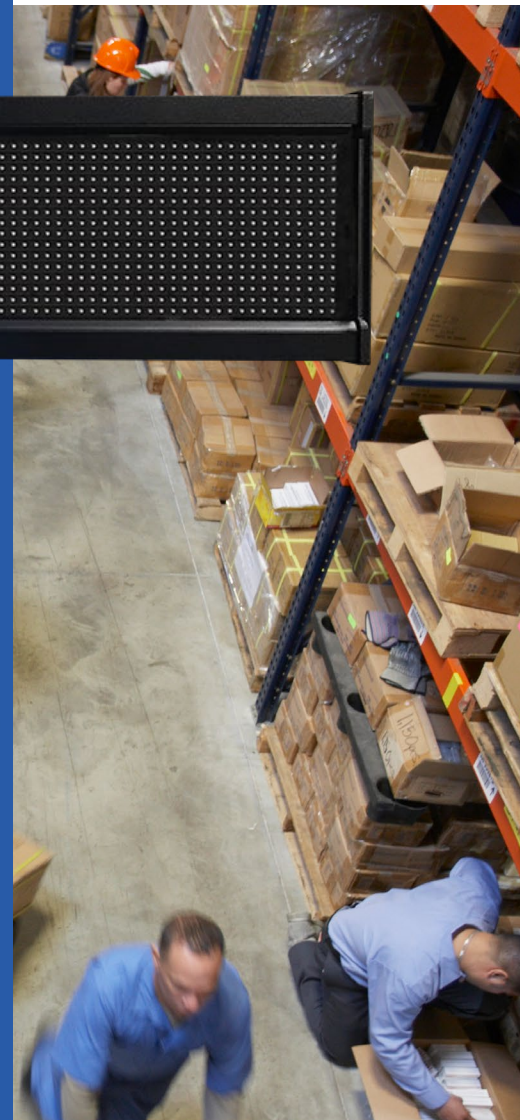


InView™

Industrial LED Message Displays



High Visibility | NEMA Rated Enclosures



www.spectrumcontrols.com
P/N 0100387-01



SPECTRUM
C O N T R O L S
An **Allient** Company



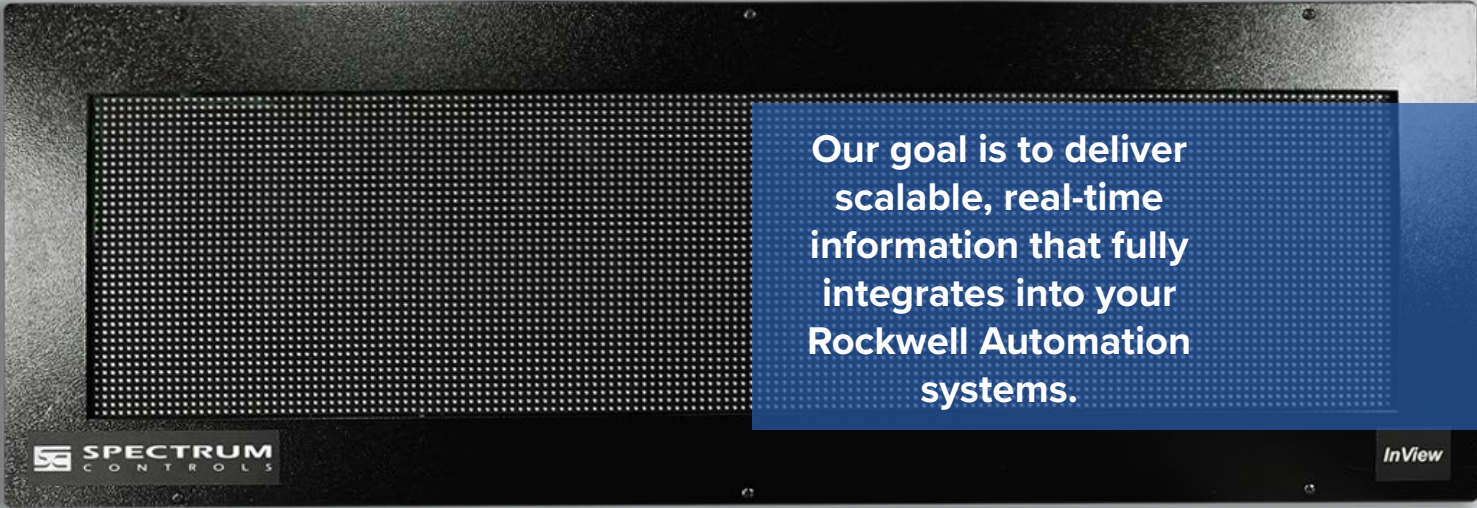
Get Your Message Across

Whether it's process alarming, safety messages, inventory data or just congratulating the team, InView delivers the right information at the right time to the right place. Choose from 6 different models, offering varying display sizes, colors, fonts, and effects.

- Preferred compatibility to Rockwell Automation controllers.
- Supports Modbus TCP/IP, EtherNet/IP & EtherNet TCP/IP.
- Fully licensed Rockwell Automation technology. Rockwell TechConnect support is included with your purchase.
- Industry tested and proven display technology with message visibility from up to 450 feet away
- Dynamic messaging, with the use of variables, for real-time information.
- Intuitive browser-based & OS independent setup—no need for separate software.
- Vastly superior viewing angle than most LCD & LED displays.

No Compromise Design

InView is engineered to ensure critical setup information is communicated quickly and with high visibility. Easy setup and robust enclosures make InView the ultra-reliable solution you've been looking for.



**Our goal is to deliver
scalable, real-time
information that fully
integrates into your
Rockwell Automation
systems.**

Full Color

Communicate your productivity, status, and alarm conditions on the brightest, most colorful, and efficient InView display ever engineered.

These displays are brighter and require less power than their predecessors.

2706-P92C2-SC (shown left)

2706-P94C2-SC

2706-P42C2-SC

2706-P44C2-SC



Dynamic Messages

InView displays allow for real-time dynamic messages using input variables at a vastly superior viewing angle than most LCD or LED displays.



- Fully licensed Rockwell Automation technology
- Rockwell TechConnect support included with your purchase

InView Display Specifications

2706-P...-SC	Display Size	Lines	Viewing Distance	Max. Character Height	Enclosure	Voltage	Weight
P42C2	36" x 4.8" (91.4 x 12.2 cm)	1 - 2	200' (60 m)	4.8"	NEMA Type 12	120-240V AC 50/60Hz	21 lbs (9.5 kg)
P44C2	72" x 4.8" (182.9 x 12.2 cm)	1 - 2	200' (60 m)	4.8"	NEMA Type 12	120-240V AC 50/60Hz	21 lbs (9.5 kg)
P92C2	39.7" x 9.9" (100.8 x 25.1 cm)	1 - 5	450'+ (137 m)	9.9"	NEMA Type 4 (IP66)	120-240V AC 50/60Hz	62 lbs (28.1 kg)
P92C2X	39.7" x 9.9" (100.8 x 25.1 cm)	1 - 5	450'+ (137 m)	9.9"	NEMA Type 4X SST enclosure (IP66)	120-240V AC 50/60Hz	62 lbs (28.1 kg)
P94C2	69.4" x 9.9" (176.3 x 25.1 cm)	1 - 5	450'+ (137 m)	9.9"	NEMA Type 4 (IP66)	120-240V AC 50/60Hz	94 lbs (42.6 kg)
P94C2X	69.4" x 9.9" (176.3 x 25.1 cm)	1 - 5	450'+ (137+ m)	9.9"	NEMA Type 4X SST enclosure (IP66)	120-240V AC 50/60Hz	94 lbs (42.6 kg)

P##C2 = Full-color.

Operating Temp: 0°C to 55°C (32°F to 131°F). - P9XC2 displays are rated at 0°C to 60°C (32°F to 140°F)

Storage Temp for all displays is -25°C to 70°C (-13°F to 158°F).

All displays are UL Safety, UL Hazardous Locations, CE EMC, CMIM, FCC, and UKCA EMC certified.

Easy-to-Use Comms Module

Supports Modbus TCP/IP, EtherNet/IP & EtherNet TCP/IP!

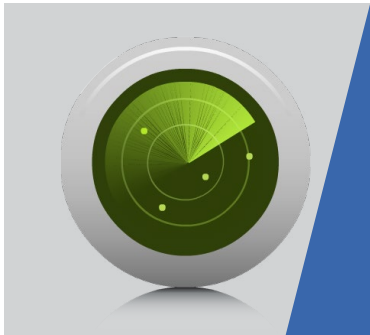
Protect your investment with a browser-based & OS-independent communications module. With virtually every configuration just two-clicks away, our easy-to-use setup enables you to spend less time learning and more time doing.



Configuration

Easily add, or edit, messages using one of our many built-in features to create the information you want to see.

Easy Tags functionality eliminates the need for special PLC add-on instructions.



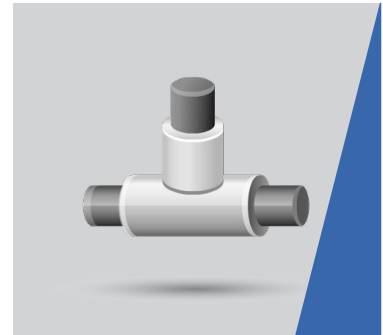
Diagnostics

Keep your displays up and running with easy access to your system logs, status, and reports.



Maintenance

Take control of your solution with firmware updates, message import/export, and custom characters.



Network

Simple network setup enables you to easily configure a static IP or a DHCP client.

Comms Module Selection Guide

EtherNet/IP is the preferred deployment method. Other deployment methods are available. Each display requires a comms module for Easy Tag configuration.

Communications Module

2706-	PENETP2-SC	PENETM2-SC	PENETM2C2-SC	PENETK2-SC
P2 displays	✓	•	•	•
P4 displays	•	✓	•	•
P4xC2 displays	•	•	✓	•
P7 displays	•	•	•	✓
P9 displays	•	•	•	✓
EtherNet/IP	✓	✓	✓	✓
EtherNet TCP/IP	✓	✓	✓	✓
Modbus TCP/IP	✓	✓	✓	✓

InView Accessories

Catalog No.	Description
**2706-NC13-SC	RS-232 operating/programming cable, 9-pin D shell to 9-pin D shell, 5 m (16.4')
**2706-PCABLE1-SC	InView program/download cable
**2706-PSW1-SC	InView messaging software with ActiveX control (only needed for Legacy Comms). Requires Windows XP

**Legacy product - Accessory only available for a Legacy Comms Module



Corporate Office:

1705 132nd Ave NE

Bellevue, WA 98005

Telephone : +1 (425) 746-9481

Email: spectrum@spectrumcontrols.com



Technology Partner

A ROCKWELL AUTOMATION PARTNER