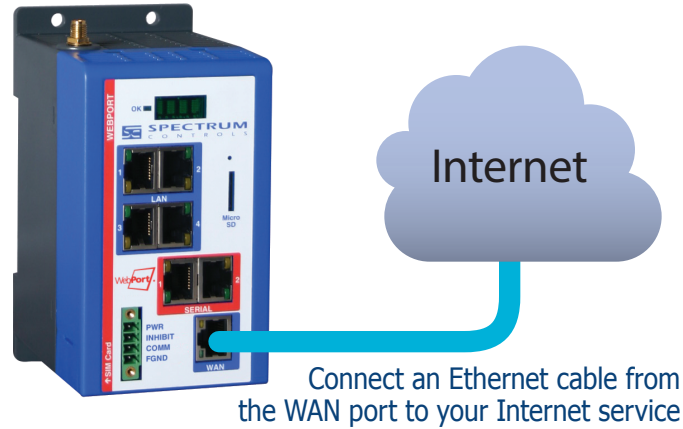
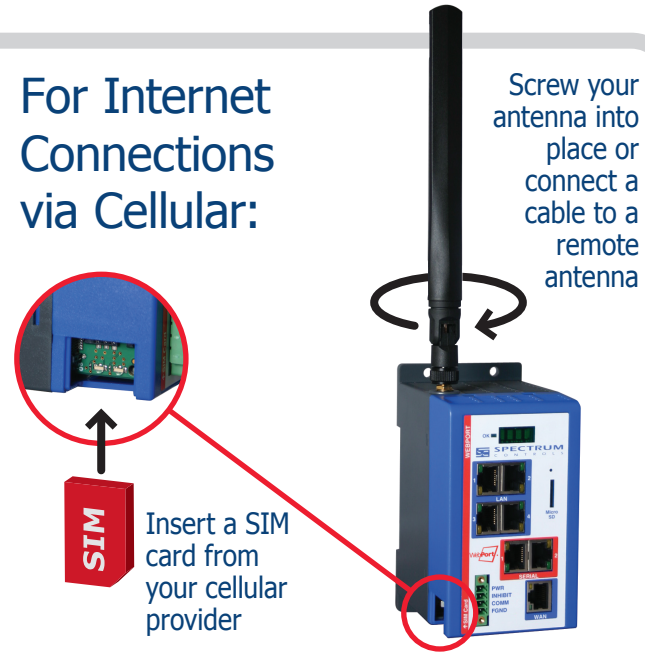


Quick Start

1 For Internet Connections via Ethernet:



OR For Internet Connections via Cellular:



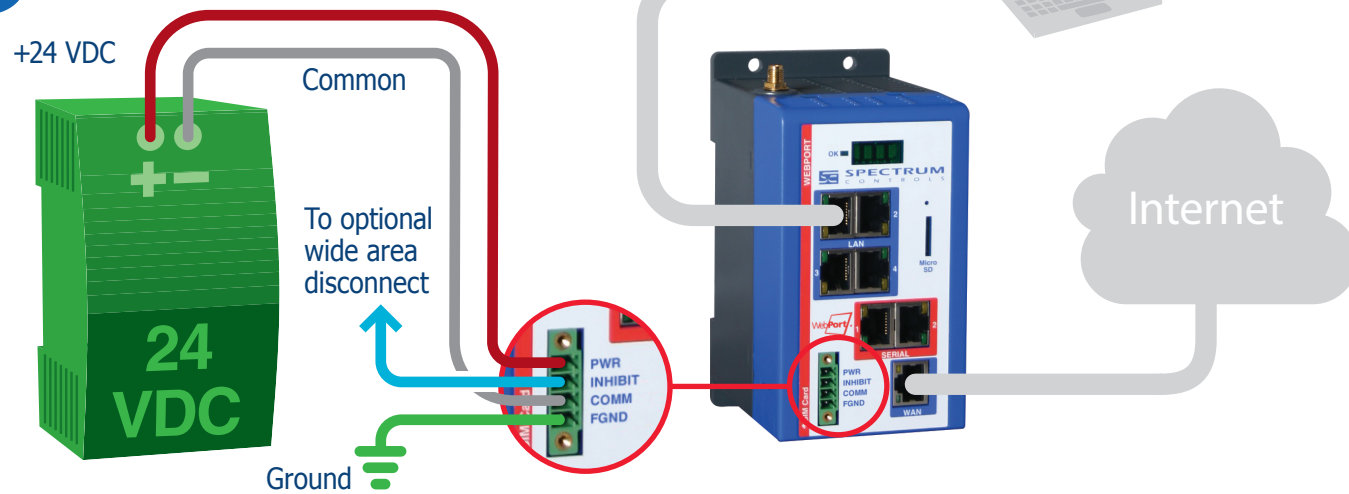
2 Connect PC to LAN Port

Connect an Ethernet cable from the LAN port to your PC. Do not connect to the WAN port.



3 Connect Power Supply

Wire size: 22-14 gauge (2 mm) stranded
Tightening torque, min 0.22 Nm (2 in/lbs.)

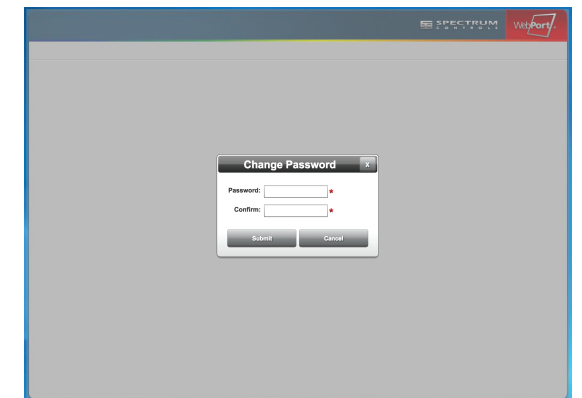


4 Log In to WebPort

Type your LAN IP address into your browser. Then, enter the default username and password.

Username: admin
Password: spectrum

Create a new password for your account.



- Required from User:
- Internet connection (for WAN connectivity)
 - SIM card from cellular provider and cell antenna (for cellular connectivity)
 - 24 VDC power supply
 - All cables and wiring

Models Covered: WP-R-3G-SW-0, WP-ET-SW-0, WP-R-3G-SW-I
What's Next? See the other side to register your WebPort to the cloud.
Questions? Access our built-in online help.

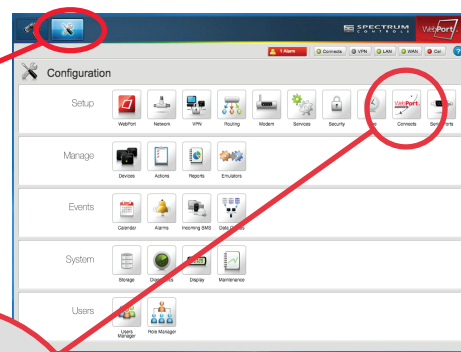
Registering WebPort Connects



5

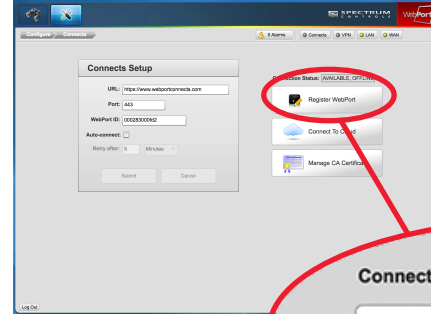


Open the Configuration dashboard at the top of the screen.



Then, click on the WebPort Connects button. Both the PC and WebPort need Internet access for this step.

6



Connection Status: AVAILABLE, OFFLINE

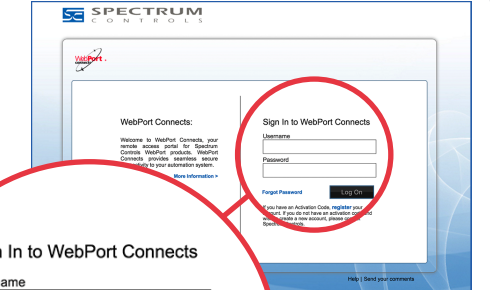
Register WebPort

Once you have clicked the WebPort Connects button, click on "Register WebPort." Register your account and Webport.

7

www.webportconnects.com opens in your browser.

Enter your WebPort Connects credentials.



Sign In to WebPort Connects

Username

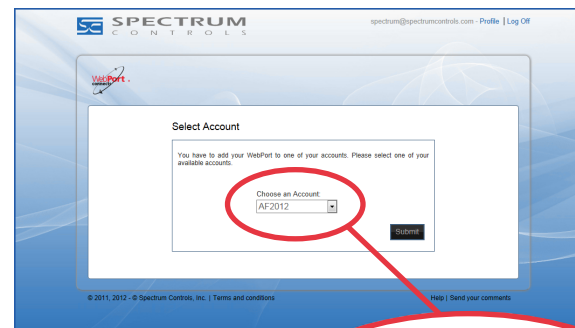
Password

Forgot Password Log On

If you have an Activation Code, register your account. If you do not have an activation code and wish to create a new account, please contact Spectrum Controls.

NOTE: If you don't have a Connects account, create a WebPort Connects account at www.webportconnects.com.

8



Next, choose your account from the dropdown menu.

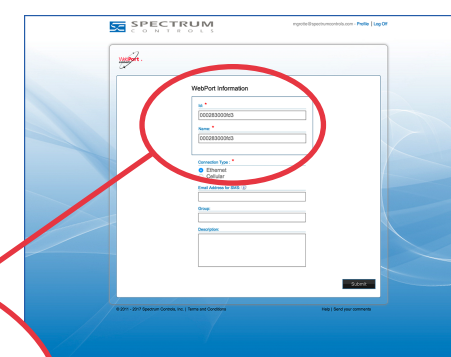
After making your selection, click Submit.

Choose an Account:

AF2012

9

Enter ID, WebPort name, and other information in the WebPort dialog.



WebPort Information

ID: *

000283000fd3

Name: *

000283000fd3

Connection Type: *

Ethernet

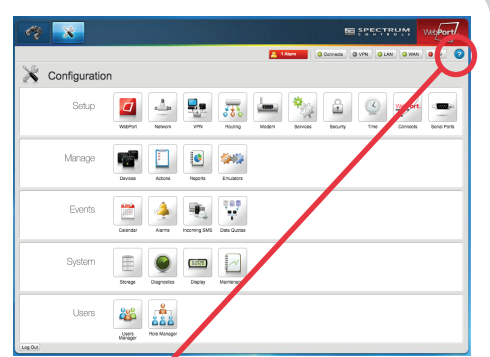
Cellular

Email Address for SMS: ⓘ

After entering your information, click Submit.

10

You are now a registered member of the WebPort family. To find out how to connect to the cloud, set up an alarm, configure a tag, and much more, please visit the context-sensitive help located on your WebPort. For more help, check out our YouTube Channel at: www.youtube.com/WebportAcademy



You can access context-sensitive help at anytime by clicking the online help button on your WebPort.

ATEX
Ex nA IIC T5 Gc
 II 3G
DEMKO 11 ATEX 1103445X

Special condition for safe use (ATEX)

1. Provision shall be made to prevent the rated voltage being exceeded by transient disturbances of more than 140% of the peak rated voltage.
2. The system shall be mounted in an ATEX certified enclosure with a minimum ingress protection rating of at least IP54, as defined in IEC60529 of EM529 and used in an environment of not more than pollution degree 2. The enclosure shall be accessible only with the use of a tool.

SUITABLE FOR USE IN CLASS I, DIVISION 2, GROUPS A, B, C, AND D HAZARDOUS LOCATIONS, OR NONHAZARDOUS LOCATIONS ONLY.

WARNING - EXPLOSION HAZARD - DO NOT DISCONNECT EQUIPMENT WHILE THE CIRCUIT IS LIVE OR UNLESS THE AREA IS KNOWN TO BE FREE OF IGNITABLE CONCENTRATIONS.
AVERTISSEMENT - RISQUE D'EXPLOSION - Ne déconnectez l'équipement tandis que le circuit est sous tension ou si la zone est connue pour être libre de Concentrations inflammables.

WARNING - EXPLOSION HAZARD - SUBSTITUTION OF ANY COMPONENT MAY IMPAIR SUITABILITY FOR CLASS I, DIVISION 2.
DANGER D'EXPLOSION - La substitution de composants peut rendre cet équipement impropre à une utilisation en environnement de Classe I, Division 2.