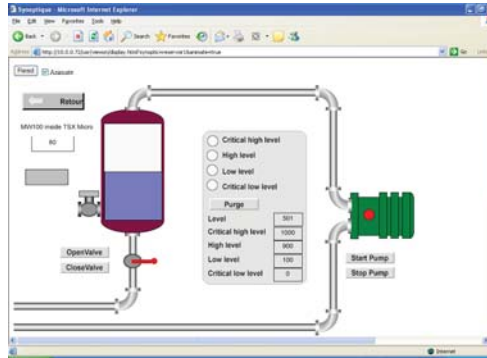


## Web-Based HMI Editor for WebPort Insite-ViewOn2 Software

*InSite-ViewOn2 is a graphical environment to create animated HMI pages for the WebPort 4001, 4003 & 4005 embedded web server.*

*With InSite-ViewOn2, you create HMI web pages that contain entire synoptics with various objects and animations, within minutes and without any specific web skills.*

*Thanks to InSite-ViewOn2, it is now possible to monitor and interact with automated processes, from your web browser interface, through your own customized HMI.*



Powered By 

**A Better Way to  
Manage Your Data**

### Typical Applications

- | **Infrastructure & Utilities:** Local or remote application monitoring and control (windmills, multi-site cold and warm control, building management, etc.)
- | **Machine Building:** Local or remote device front-end and application HMI (measuring devices, power generators, service & maintenance, etc.)
- | **Industry:** Cost-effective SCADA solution for small and medium applications (tank monitoring, water treatment, facilities, HVAC, etc.)

### Easy-to-Use Editor

- | Graphical design environment
- | Intuitive user interface
- | Comprehensive drawing tools library
- | Extended set of configurable animations
- | Direct import of WebPort tag name database
- | No web skills required
- | Support for WebPort advanced functions (BASIC scripts)
- | Multi-page project management
- | Automatic HTML compiler and file upload to WebPort
- | Immediate page activation on WebPort, after upload

### Characteristics

- | All traffic on http port (80), no additional open port required, no ActiveX
- | JAVA technology (deployed by Sun Microsystems®)
- | Small page footprint, compatible with PSTN and GSM/GPRS applications
- | High refresh rate
- | Multilingual support

# Specifications



Powered By eWON

<b>Drawing Tools</b>	Zoom, Group, Order, Navigator Window.
<b>Figures</b>	Ellipse, Rectangle, Polygon, Line, Polyline, Half Ellipse, Entry Field, Buttons, Quarter Ellipse, Text, Image.
<b>Animations</b>	Bar Graph, Status Colors, Group Status Colors, Level Colors, Increment Variable, Close, Open Link, Pilot Translation, Reverse Bit, Rotation, Set Variable, Show/Hide, Translation.
<b>Programming</b>	Scripts in BASIC language.
<b>WebPort Communication</b>	Import of WebPort tag names database. Automatic page compile and export.
<b>Project Management</b>	Multi-project, multi-page.
<b>Web Server</b>	1MB to 3MB storage space for web pages (according to memory setup). Very small page footprint.
<b>Refresh Rate</b>	Up to 3 refreshes per second on LAN.
<b>Languages</b>	English
<b>WebPort Requirements</b>	WebPort Seires 4000 (4001, 4003, 4005, 4005CD). Firmware: 4.1 S3
<b>PC Requirements</b>	Pentium III 800MHz. 256MB SDRAM (512MB recommended). 300MB hard disk. OS: Windows 2000 Professional or Windows XP. Browser: Internet Explorer 5.5 or 6. Plug-in: Sun JAVA Runtime

## Product Reference

<i>Catalog No.</i>	<i>Description</i>
VW20001	One InSite-ViewOn2 seat with unlimited tags
VW20003	Three InSite-ViewOn2 seats with unlimited tags



Spectrum Controls, Inc.  
P.O. Box 5533 | Bellevue, WA 98006 USA  
**Tel** 425-746-9481 | **Fax** 425-641-9473  
**Email** [spectrum@spectrumcontrols.com](mailto:spectrum@spectrumcontrols.com)  
[www.spectrumcontrols.com](http://www.spectrumcontrols.com)

Copyright ©2006-2007, Spectrum Controls, Inc. All rights reserved. All trademarks are the property of their respective owners. Specifications subject to change without notice. Printed in USA. Rev 01/1/09